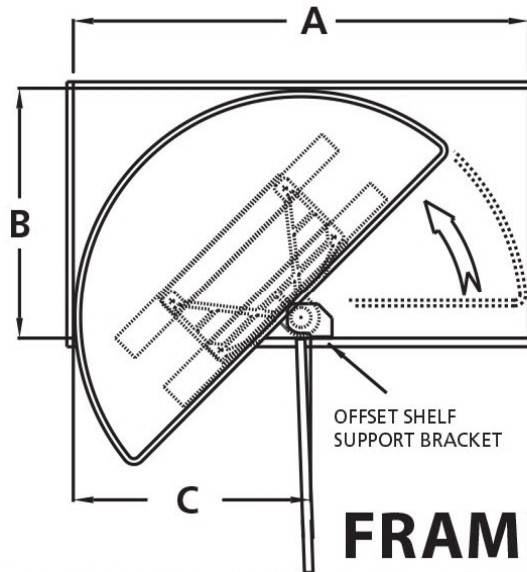


**STANDARD AND 90-DEGREE
BRACKETS COME WITH EACH UNIT**

FRAMED CABINET

DIMENSIONS (A, B, AND C ARE MINIMUMS. 32" TRAY SHOWN IN DIAGRAM.)

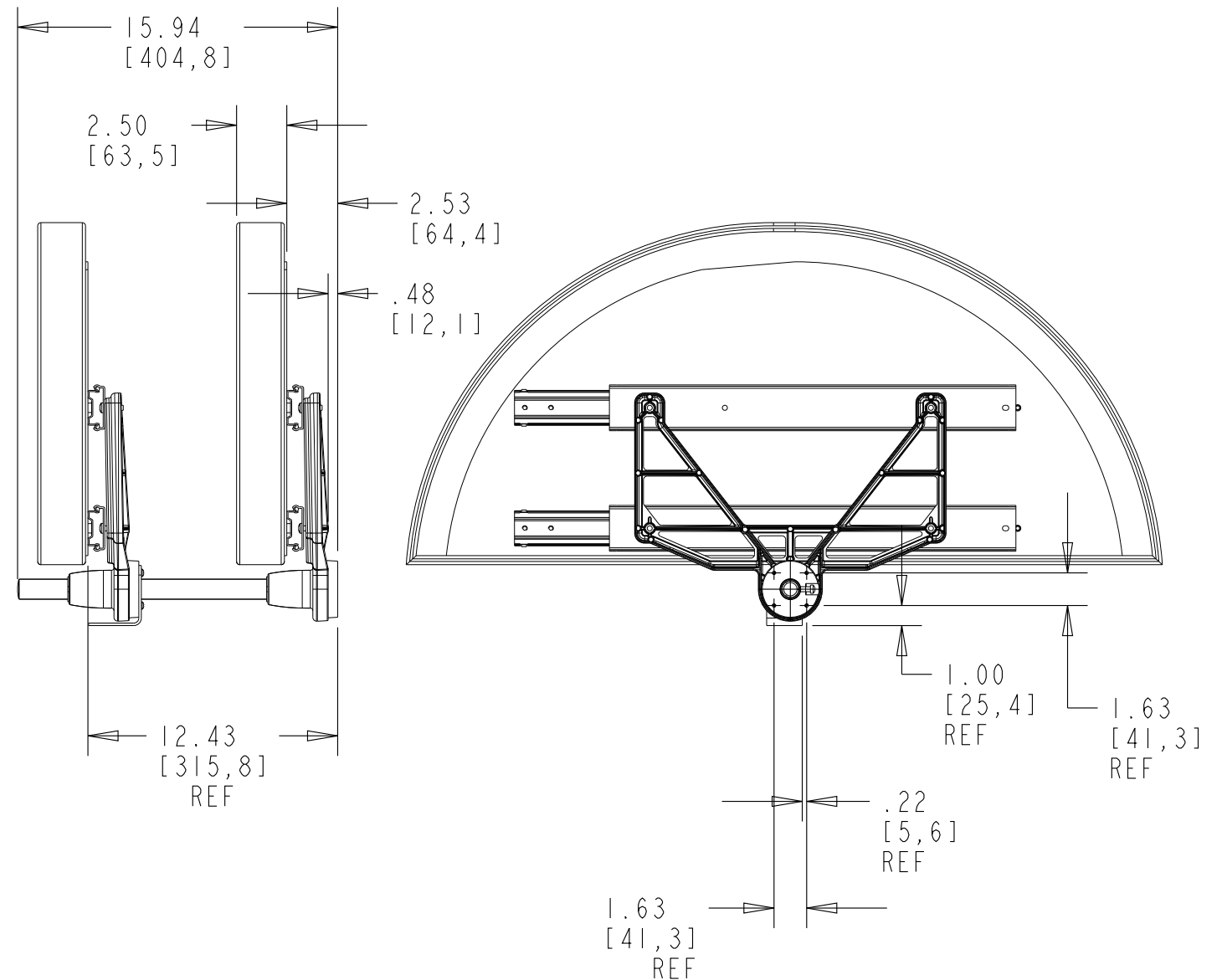
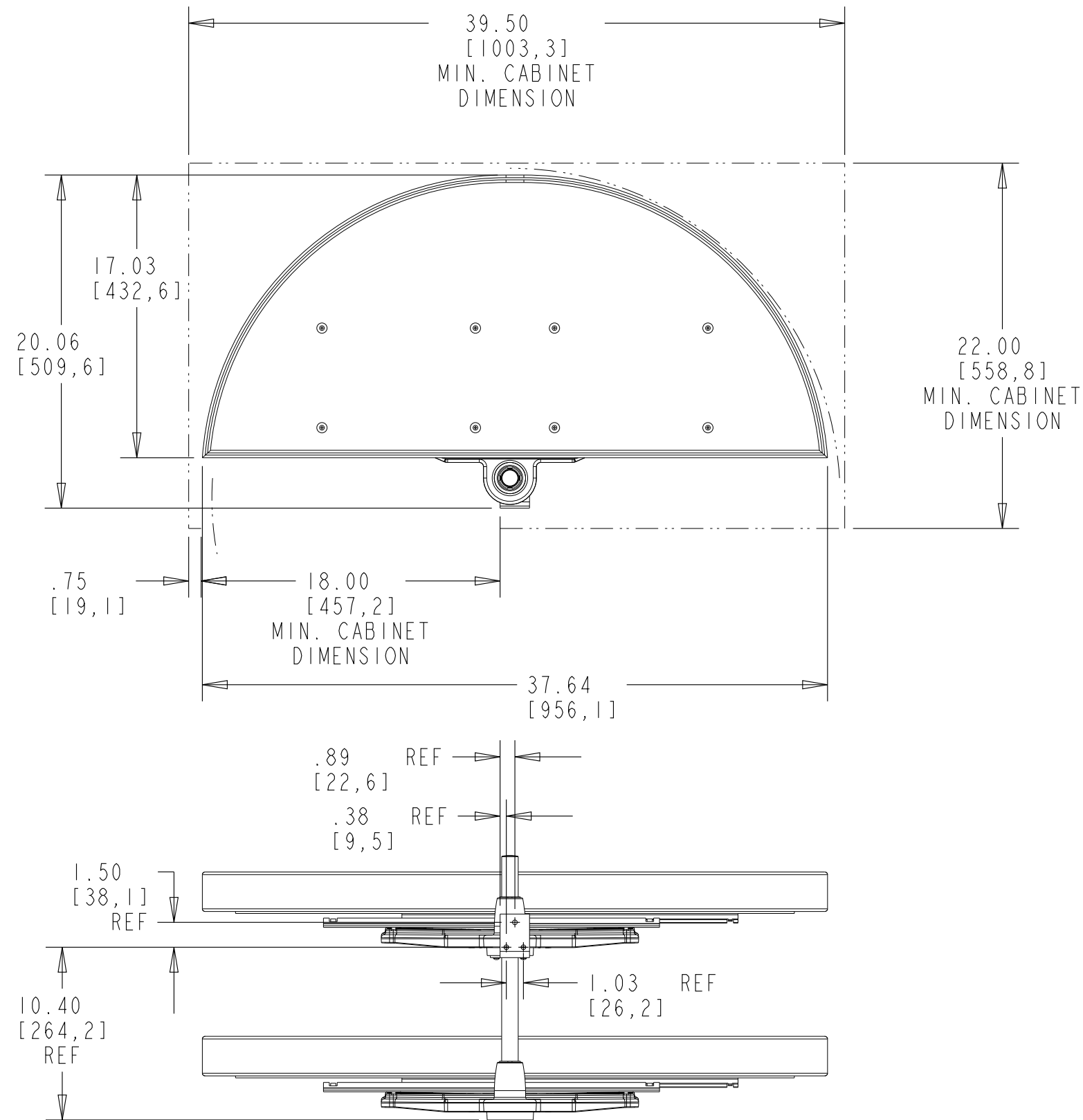
NOM Tray size	A	B	C	D
32" (813 mm)	34-1/4" (870 mm)	22" (559 mm)	12" (305 mm)	11-1/8" (283 mm)
35" (889 mm)	37" (940 mm)	22" (559 mm)	15" (381 mm)	14-1/8" (359 mm)
38" (965 mm)	39-1/2" (1003 mm)	22" (559 mm)	18" (457 mm)	17-1/8" (435 mm)



**STANDARD AND 90-DEGREE
BRACKETS COME WITH EACH UNIT**

FRAMELESS CABINET (EURO)

DIMENSIONS (A, B, AND C ARE MINIMUMS. 38" TRAY SHOWN IN DIAGRAM.)




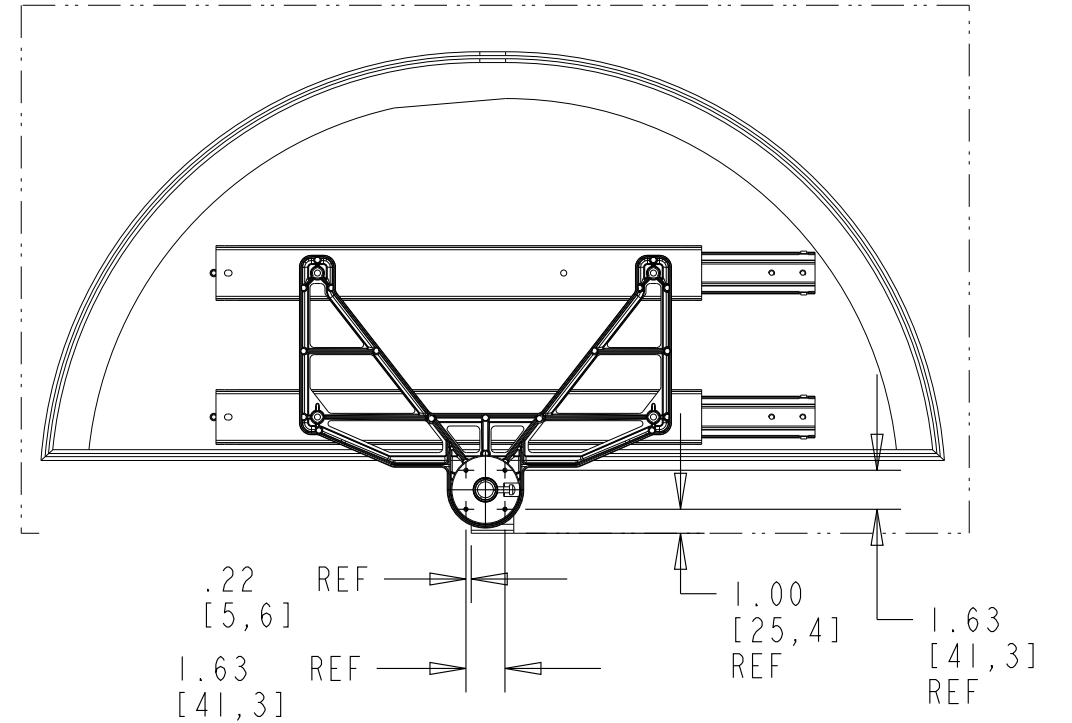
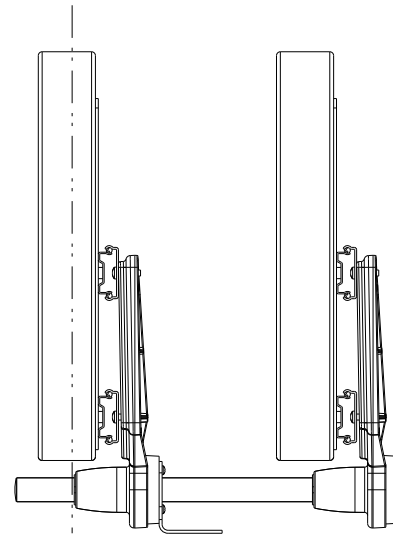
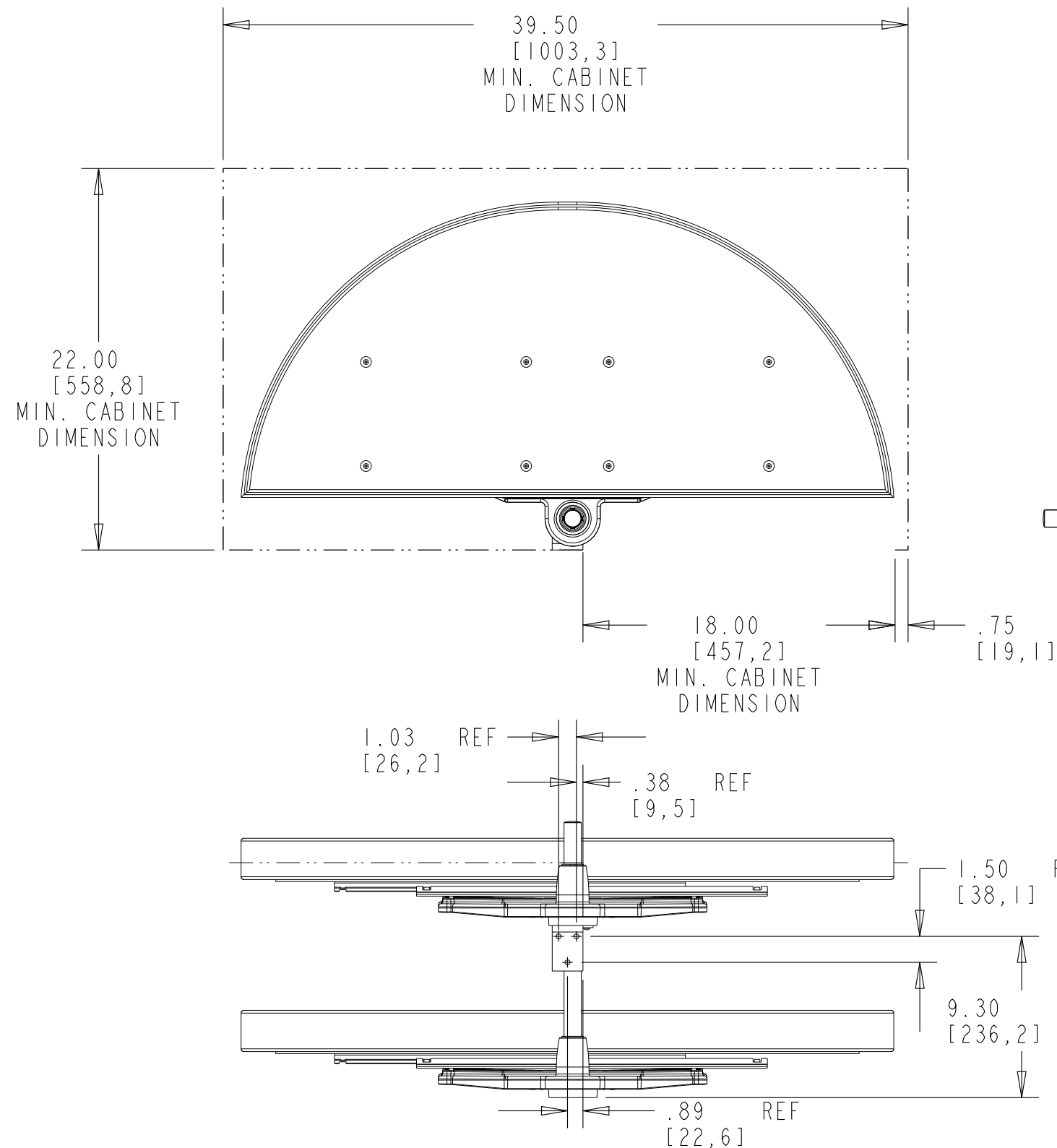
NOTE: THIS DRAWING SHOWS INSTALLATION FOR RH BLIND CORNER.
SEE SHT. 2 FOR INSTALLATION IN LH BLIND CORNER.

CUSTOMER DRAWING

This drawing is the property of Rev-A-Shelf (RAS) and is disclosed in confidence to the extent its subject matter is original to RAS. Any vendor receiving this drawing from RAS shall hold and use this drawing for the sole benefit of RAS and shall not disclose it to, or use or reproduce it for any third party, or perform any act adverse to the interest of RAS with respect to this drawing without the express written permission of RAS. Vendors shall not revise any physical, dimensional or performance characteristic unless authorized by Rev-A-Shelf Engineering.

A	5-9-11	KRR	ECN11-031
REV.	DATE	BY	DESCRIPTION OF CHANGE

INCH [MM]	AMERICAN PROJECTION 		BY	DATE	REV-A-SHELF®, INC.	
		DRAWN	KRR	4-26-10	SIZE B	38" HALF MOON NATURAL WOOD 2 TRAY ASSEMBLY
TOLERANCES MAT. DEC. (WOOD) .XX ±.03 [.8mm] (OTHER) .XX ±.02 [.5mm] (ALL) .XXX ±.005 [.13 mm] FRACTIONS ±1/32 [.8 mm]		ANGLES ±1/2°	MATERIAL		DRAWING NO.	SCALE
			FINISH		LD-4NW-882-38-1-CUST	0.125
					PART NO.	SHEET OF
			LD-4NW-882-38-1		1	3

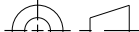


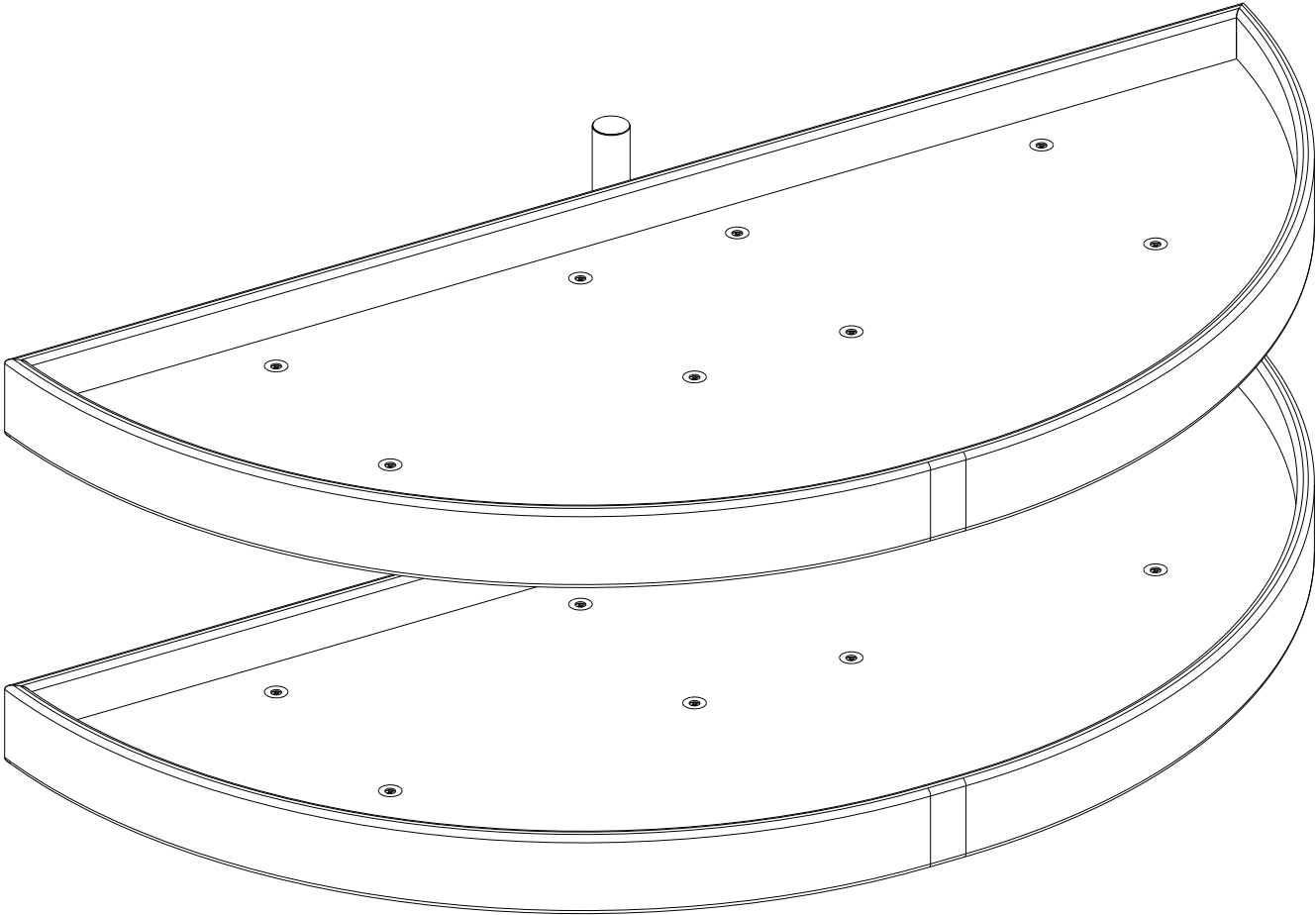
NOTE: THIS DRAWING SHOWS INSTALLATION FOR LH BLIND CORNER.
SEE SHT. 1 FOR INSTALLATION IN RH BLIND CORNER.

CUSTOMER DRAWING

This drawing is the property of Rev-A-Shelf (RAS) and is disclosed in confidence to the extent its subject matter is original to RAS. Any vendor receiving this drawing from RAS shall hold and use this drawing for the sole benefit of RAS and shall not disclose it to, or use or reproduce it for any third party, or perform any act adverse to the interest of RAS with respect to this drawing without the express written permission of RAS. Vendors shall not revise any physical, dimensional or performance characteristic unless authorized by Rev-A-Shelf Engineering.

A	5-9-11	KRR	ECN11-031
REV.	DATE	BY	DESCRIPTION OF CHANGE

INCH [MM]	AMERICAN PROJECTION 		BY	DATE	REV-A-SHELF®, INC.	
		DRAWN	KRR	4-26-10		
					SIZE B	38" HALF MOON NATURAL WOOD 2 TRAY ASSEMBLY
TOLERANCES		ANGLES ±1/2°	MATERIAL		DRAWING NO. LD-4NW-882-38-1-CUST	
MAT. DEC.			FINISH		PART NO. LD-4NW-882-38-1	
(WOOD) .XX ±.03 [.8mm]					SCALE 0.125	
(OTHER) .XX ±.02 [.5mm]					SHEET 2 OF 3	
(ALL) .XXX ±.005 [.13 mm]						
FRACTIONS ±1/32 [.8 mm]						



PART DIMENSIONS		
	MIN	MAX
WIDTH		37.64 [956,1]
DEPTH		20.06 [509,6]
HEIGHT		15.94 [404,8]
WEIGHT		

MIN CABINET OPENING	
WIDTH	18.00 [457]
DEPTH	22.00 [559]
HEIGHT	16.25 [413]

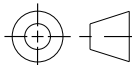
PRODUCT MAX WEIGHT RATING
63.48 Lbs PER TRAY

SLIDE SPECIFICATIONS				
SLIDE TYPE	BI-DIRECTIONAL BALL BEARING	SLIDE EXTENSION	3/4	MAX WEIGHT RATING
SLIDE CLOSING	N/A	SLIDE LENGTH	20.24	
SLIDE MOUNTING		SLIDE FINISH	ZINC	

CUSTOMER DRAWING

This drawing is the property of Rev-A-Shelf (RAS) and is disclosed in confidence to the extent its subject matter is original to RAS. Any vendor receiving this drawing from RAS shall hold and use this drawing for the sole benefit of RAS and shall not disclose it to, or use or reproduce it for any third party, or perform any act adverse to the interest of RAS with respect to this drawing without the express written permission of RAS. Vendors shall not revise any physical, dimensional or performance characteristic unless authorized by Rev-A-Shelf Engineering.

A	5-9-11	KRR	ECN11-031
REV.	DATE	BY	DESCRIPTION OF CHANGE

INCH [MM]	AMERICAN PROJECTION 	DRAWN	BY	DATE	REV-A-SHELF®, INC.	
			KRR	4-26-10	SIZE	38" HALF MOON NATURAL WOOD 2 TRAY ASSEMBLY
<div>TOLERANCES</div> <div>MAT. DEC.</div> <div>(WOOD) .XX ±.03 [.8mm]</div> <div>(OTHER) .XX ±.02 [.5mm]</div> <div>(ALL) .XXX ±.005 [.13 mm]</div> <div>FRACTIONS ±1/32 [.8 mm]</div>		ANGLES ±1/2°	MATERIAL		DRAWING NO.	SCALE
			FINISH		PART NO.	SHEET OF
					LD-4NW-882-38-1-CUST	0.200
					LD-4NW-882-38-1	3 OF 3